



**CERTIFICATE I
IN INFORMATION TECHNOLOGY**
COURSE BROCHURE

Certificate I in Information Technology

The Certificate III in Customer Support and Service Engineer course is designed to provide in-depth knowledge of customer care and support service for Information and Communication Technology Systems in any ICT organization.

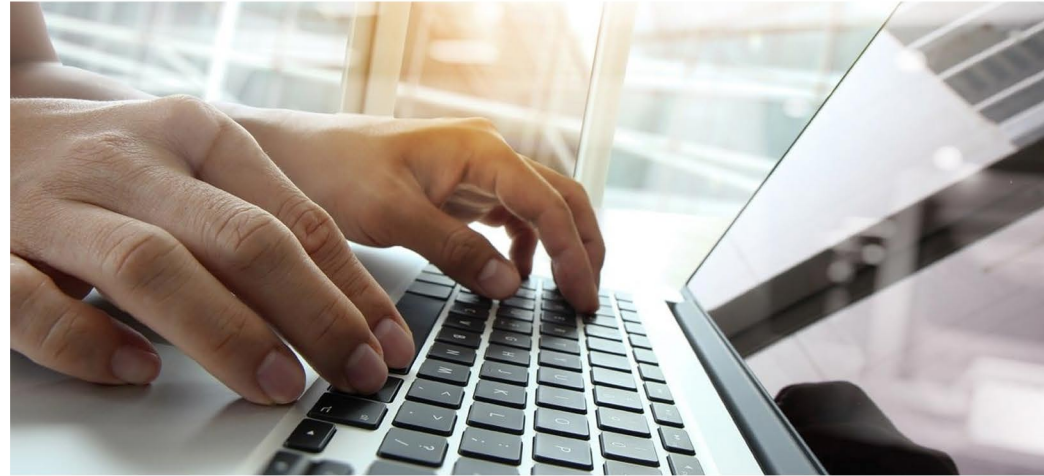
This certification enables to run standard diagnostic tests and troubleshoot hardware and software.

ENTRY CRITERIA

Completion of Basic Education AND Ability to communicate in the language of instruction

16 years of age AND Ability to communicate in the language of instruction

DURATION: 1 MONTH



CAREER OPPORTUNITIES

Following are some of the expected career outcomes from our Certificate I in Information Technology

- Entry level IT position in business organizations
- Operational in Civil Service and other organizations.

MODULES

- Operate a Personal Computer
- Operate a Word Processing Application
- Operate a Spreadsheet Application
- Operate a Presentation Package
- Send & Retrieve Information over the Internet using Browsers & Email

WINNING THROUGH KNOWLEDGE

CONTACT US

HOTLINE: 9995870

Cyryx College (Machangolhi Campus)
Ma. Rasmathige, Kenery Magu
Tel: 3328396 / 3320004

Cyryx College (Galolhu Campus)
G. Light Sky, Bodurasgefaanu Magu
Tel: 3314620 / 3005872

Email: info@cyryxcollege.edu.mv
Website: www.cyryxcollege.edu.mv



[cyryxcollege](https://www.facebook.com/cyryxcollege)



[collegecyryx](https://twitter.com/collegecyryx)



[collegecyryx](https://www.instagram.com/collegecyryx)



info@cyryxcollege.edu.mv





CYRYX COLLEGE, KENEREE MAGU, 20193, TEL : + 960 3328396

CYRYX COLLEGE, BODURASGEFAANU MAGU, 20141, TEL : + 960 3314620

WWW.CYRYXCOLLEGE.EDU.MV



[cyruxcollege](#)



[collegecyrux](#)



[collegecyrux](#)



info@cyruxcollege.edu.mv